

Increasing the value of the asset with digital solution

How to manage a modern continuous mine closure process

19 Nov. 2020

Gaël Bellenfant in The Team

- GTK: Finnish Geological Survey, Finland
 - **BRGM: French Geological Survey, France**
 - DMT GmbH & Co. KG – Civil and Mining Engineering, Germany
 - M Solution: ICT services&solutions, Finland
 - Hannukainen Mining: Mining company, Finland
-
- Engineer in geology, PhD in Geotechnics & environment (waste management)
 - At BRGM since 2006
 - Post Mining Coordinator in charge of research, public and international projects in post-mining



ClosureMatic Team in France (2019)

What do the mining industry need ? → HOW TO ?

...write the CMP ?



continuously updated

Standard way

...keep the memory of the documentation ?



Ownership and team changes



...report ?



internally and externally

Standard way

...improve social acceptance ?

17 PARTNERSHIPS FOR THE GOALS



follow the respect of stakeholder engagement



...manage the closure liabilities and uncertainties ?

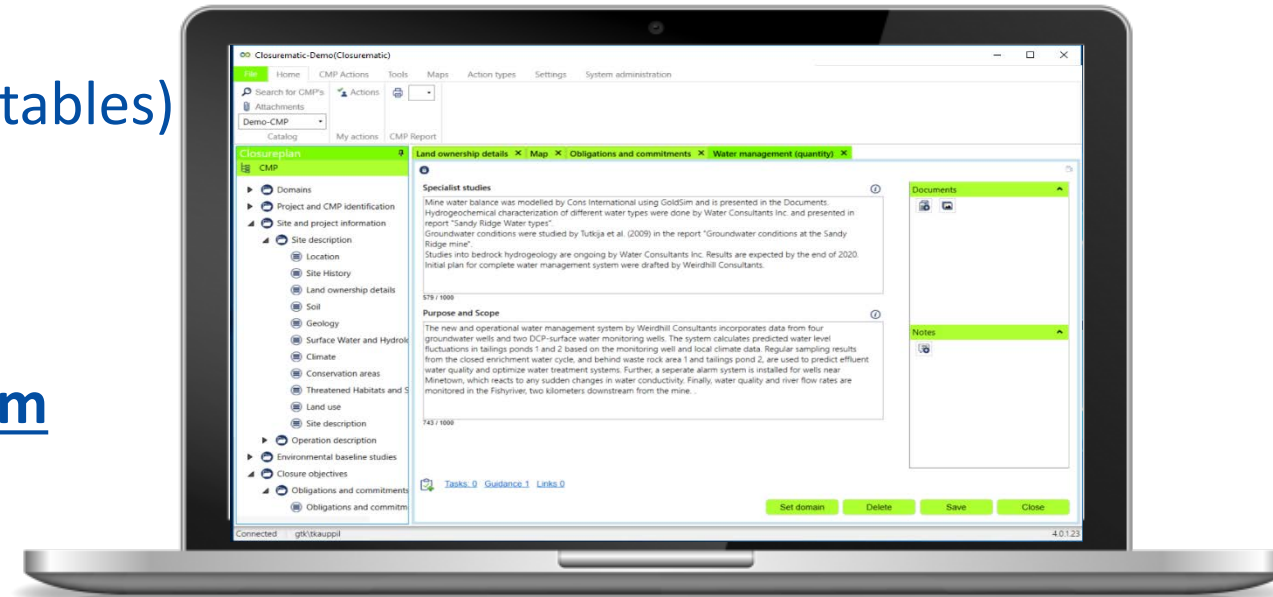


transfer of ownership



What do we bring ?

- A digital solution for a permanently up to date CMP
 - Management of user profiles
 - A Closure Management Plan (CMP) structure **tailored to the user**
 - A template system to:
 - edit the content (text, pictures, tables)
 - find guidance
 - link documents
 - create closure actions
- A **real time visual monitoring system**
- GIS interface
- Click and print/**share**



Management of user profiles

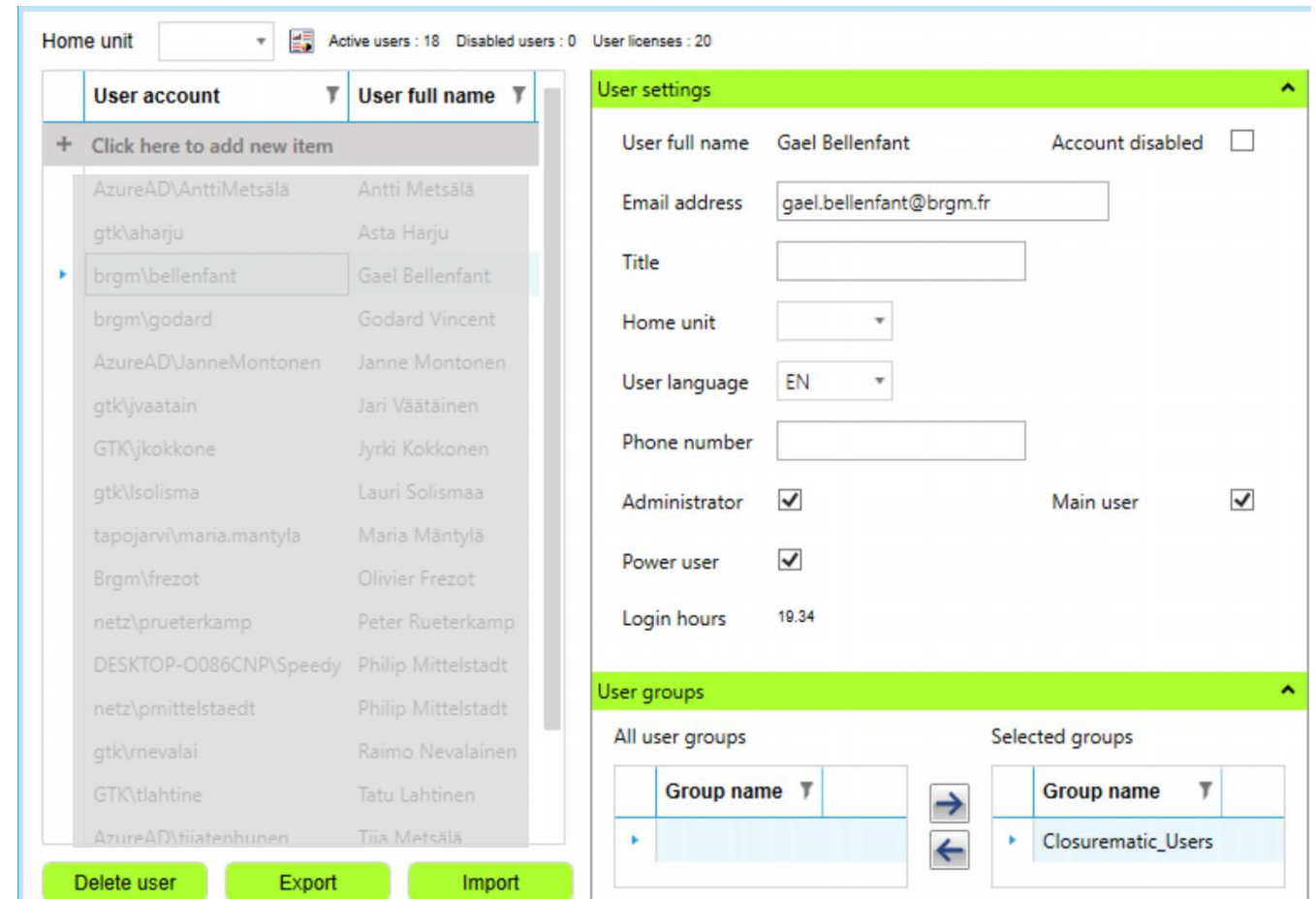
Internal users:

- Administrator
- Managers
- Operators

External users:

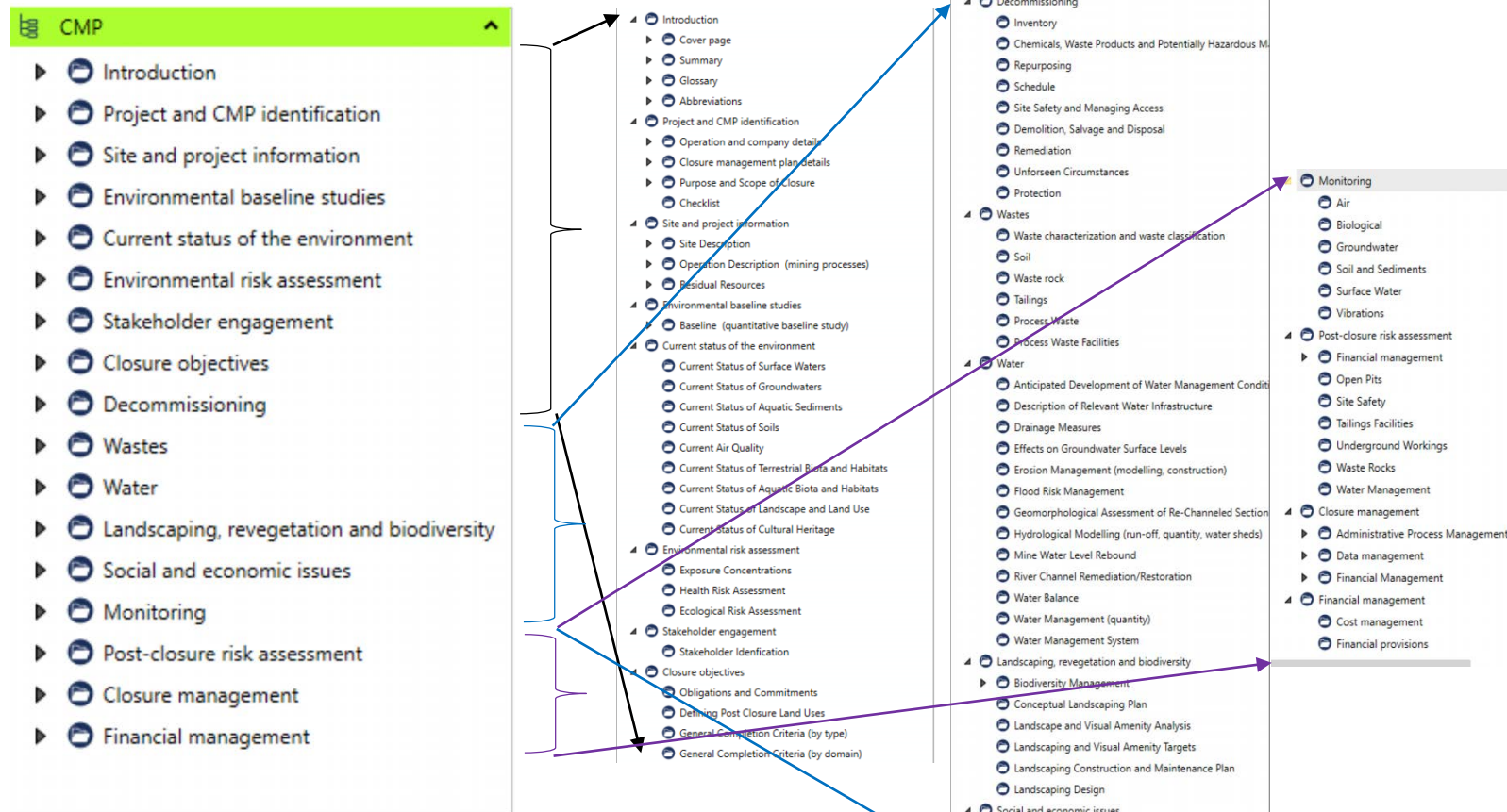
- Consultants
- Visitors

Adaptation to the user's organisation



The screenshot shows the Closurematic user management interface. At the top, it displays 'Home unit' with a dropdown, 'Active users : 18', 'Disabled users : 0', and 'User licenses : 20'. The main area is divided into two panels. The left panel, titled 'User account', shows a list of users with columns for 'User account' and 'User full name'. The user 'brgm\bellenfant' is selected. Below the list are buttons for 'Delete user', 'Export', and 'Import'. The right panel, titled 'User settings', shows the configuration for the selected user 'Gael Bellenfant'. It includes fields for 'Email address' (gael.bellenfant@brgm.fr), 'Title', 'Home unit', 'User language' (EN), and 'Phone number'. There are checkboxes for 'Account disabled', 'Administrator' (checked), 'Main user' (checked), 'Power user' (checked), and 'Login hours' (19:34). The bottom panel, titled 'User groups', shows 'All user groups' and 'Selected groups'. The 'Selected groups' list contains 'Closurematic_Users'.

Tailored Closure Management Plan Structure



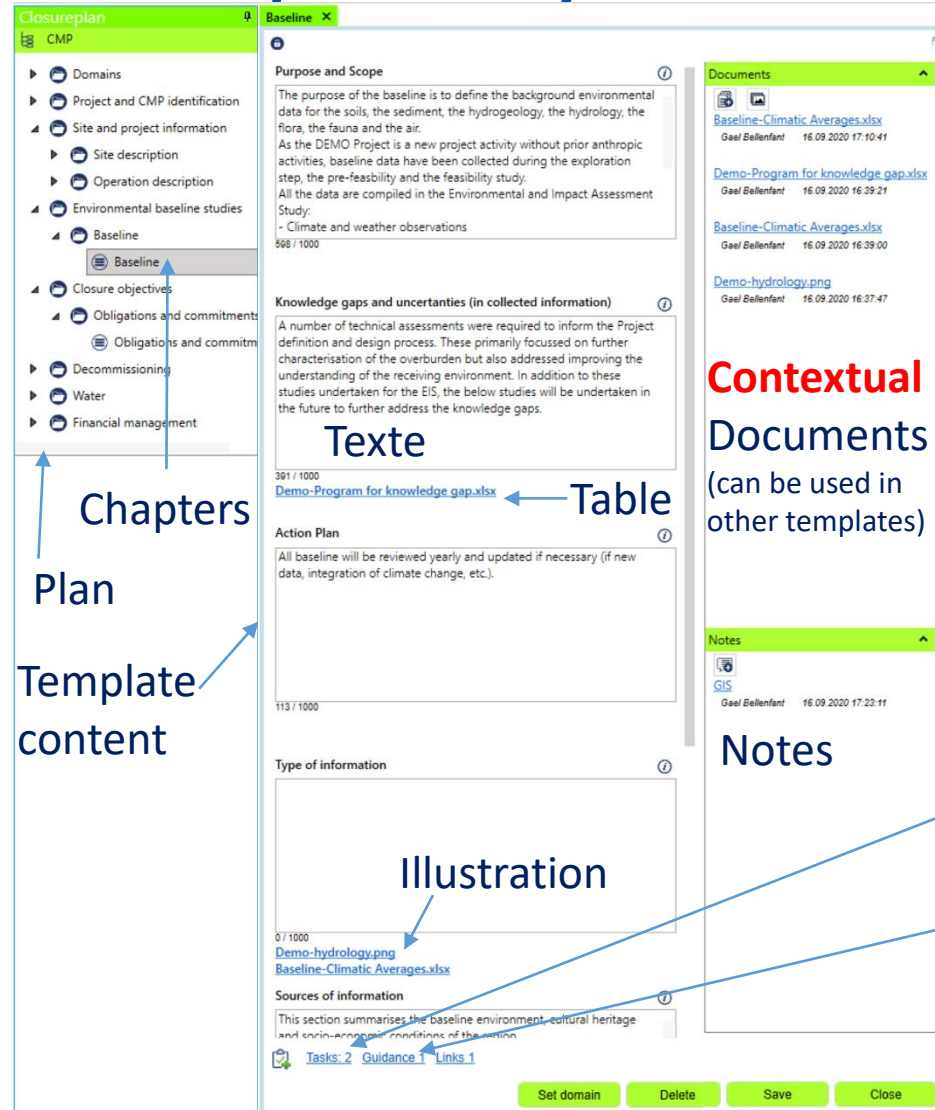
Save/edit/reuse Table of Content

To adapt the structure to:

- Mining group standard
- Administration requirements
- Project specificities (open pit, underground works, radioactive wastes...)

A template system with guidance, actions, documents

facilitating filling the information in each chapters /sub-chapters (texts, illustration, tables, references)



Chapters

Plan

Template content

Texte

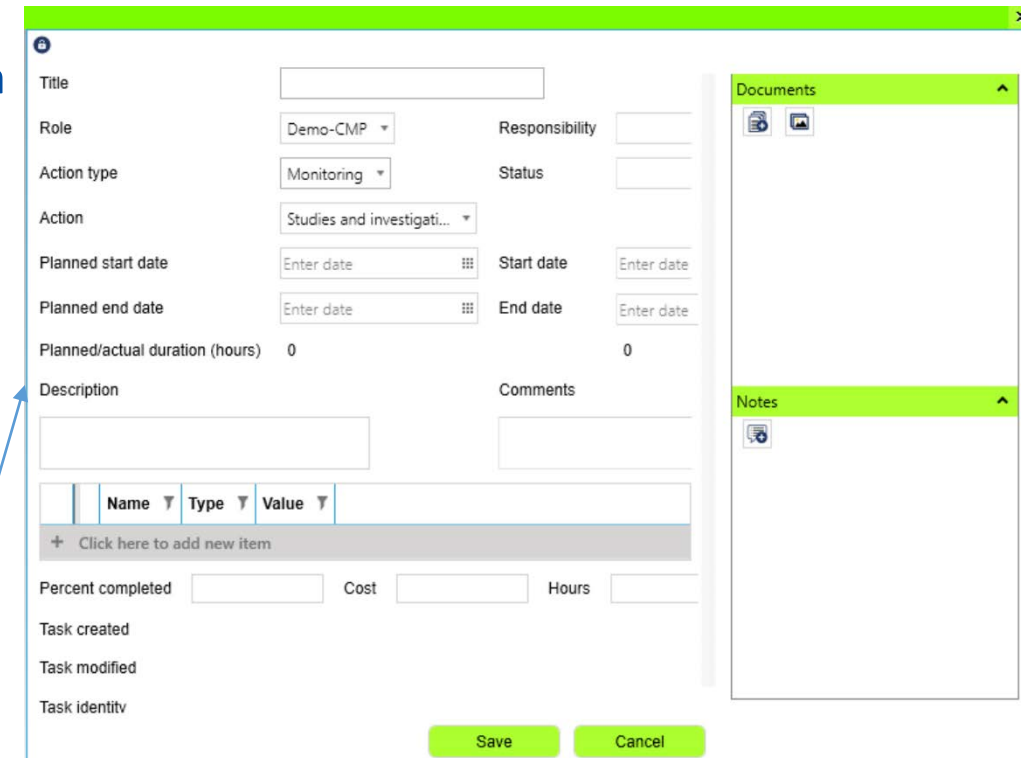
Table

Illustration

Contextual Documents
(can be used in other templates)

Notes

Type of action
Responsibility
Dates
Cost
Completion



Tasks/actions

Guidance

DMT

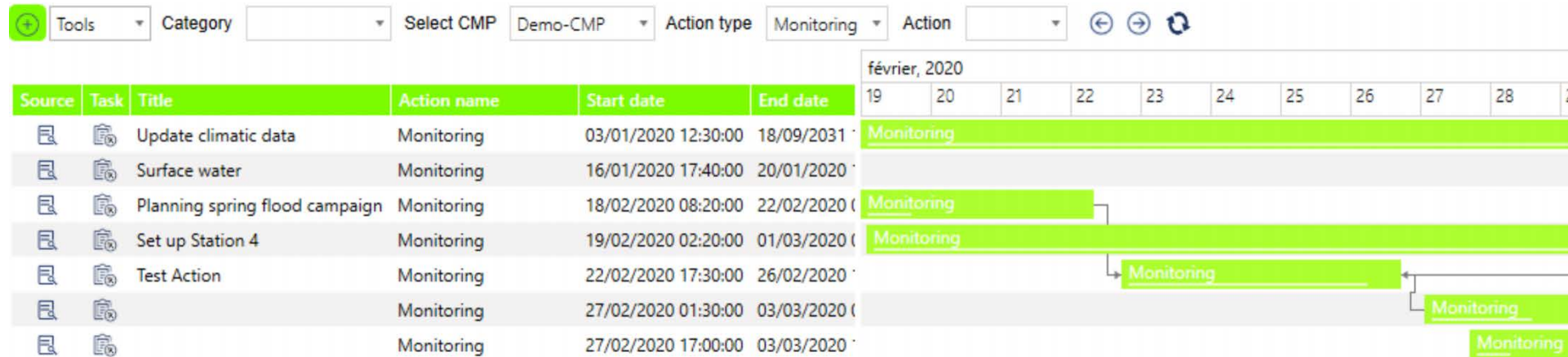


M-Solutions



A real time visual monitoring interface

- Monitoring of actions/costs



Visualization of cost/progress per:

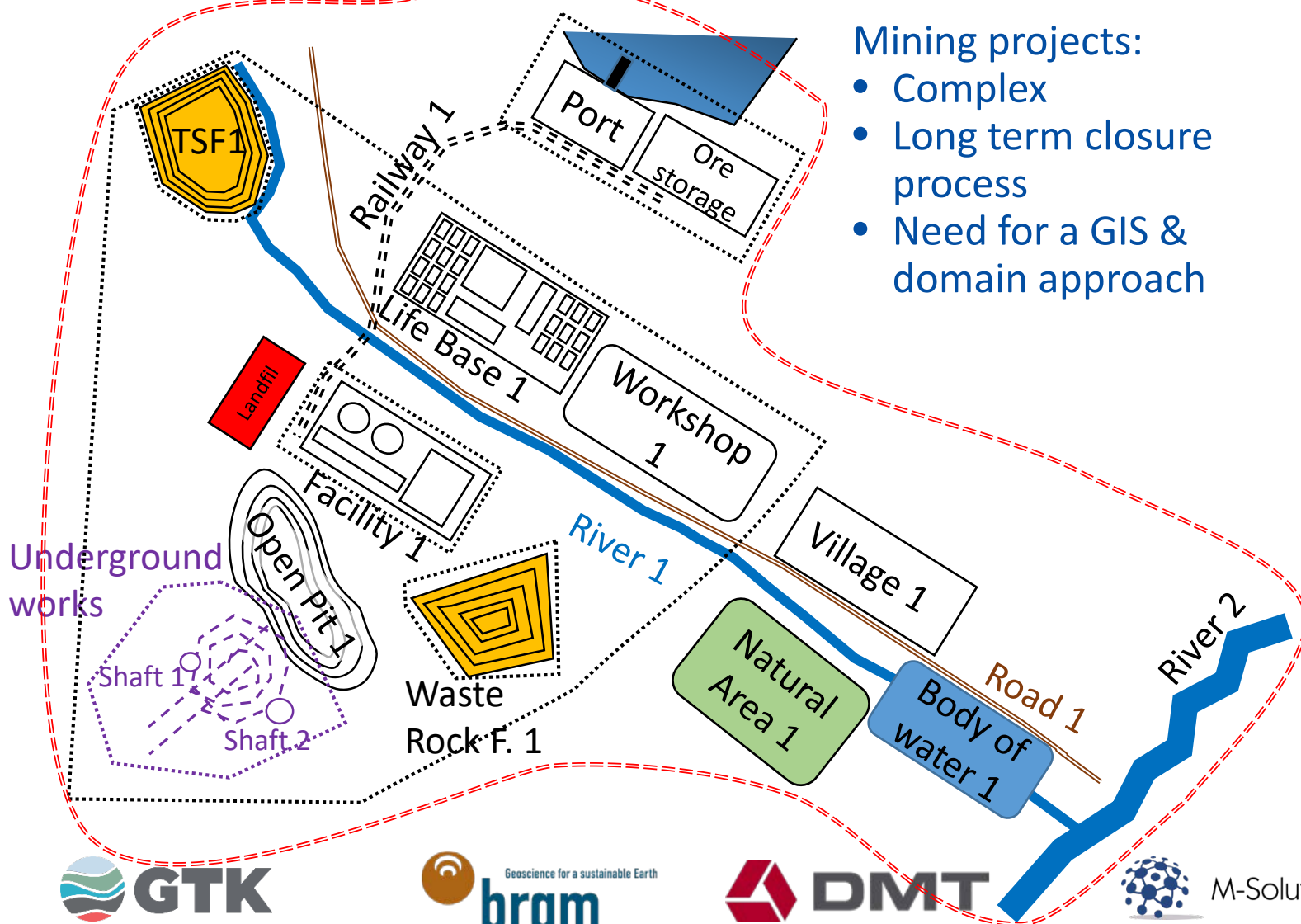
- type of action
- Domain
- Thematic
- Domain
- Responsibility

Graph (table / pie chart / ...)

Export on Excel

Transition: The Domains

Domain 0 = Whole site env & social footprints



Mining projects:

- Complex
- Long term closure process
- Need for a GIS & domain approach



This activity has received funding from the European Institute of Innovation and Technology (EIT), a body of the European Union, under the Horizon 2020, the EU Framework Programme for Research and Innovation

Domains	
Name	Number
Wasterock 1	1
Description	Final land use
Wasterock facility	Wasterock area, revegetated to recreational forest site
Obligations	Planned completion
Cover structures to make the facility non-polluting, revegetation	17.09.2020 16:00
<div>Header/Details</div> <div> <div>Delete</div> <div>Save</div> <div>Close</div> </div>	

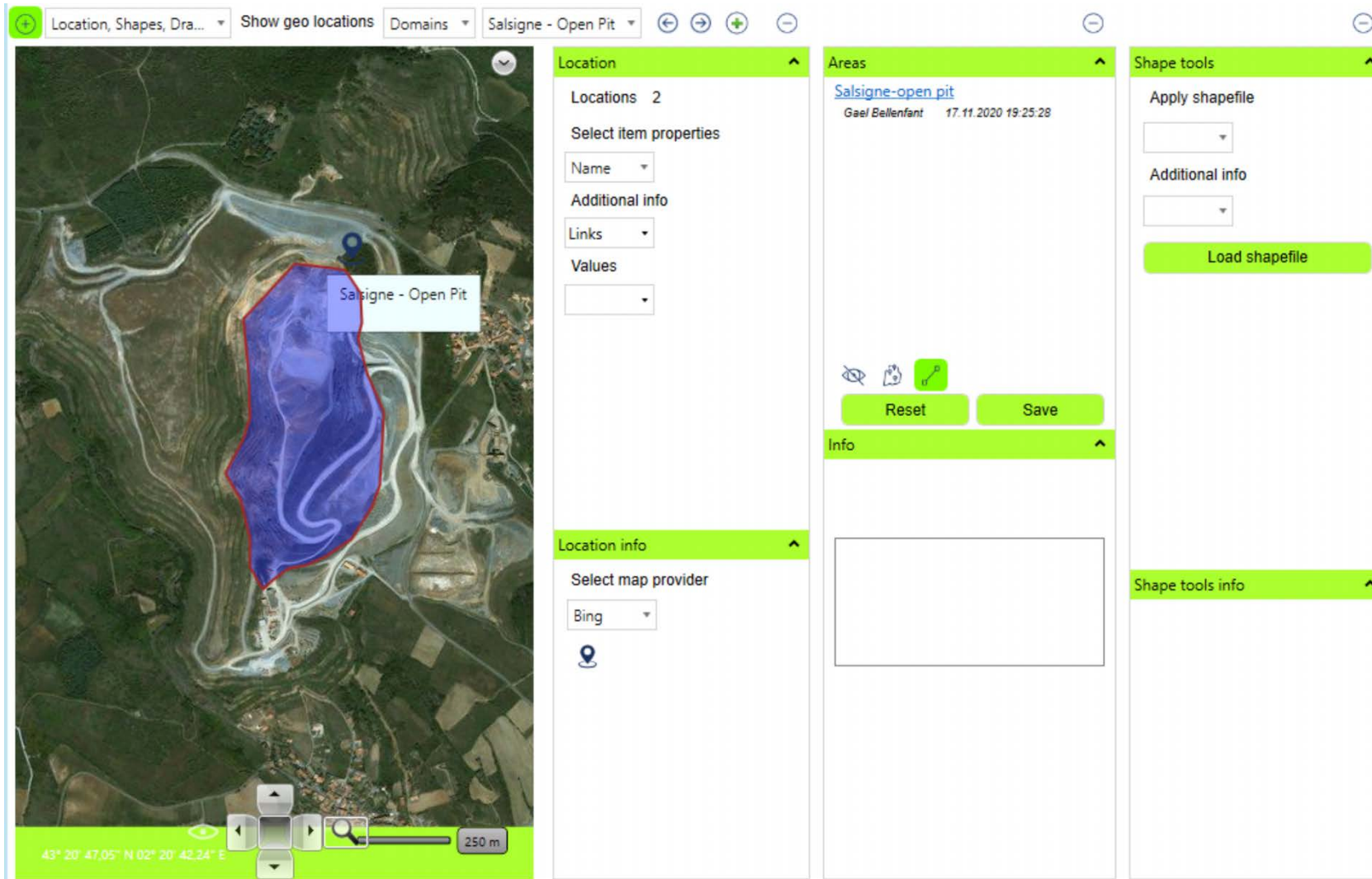
For each domain:

- Land Uses
- Closure objectives / Completion criteria
- Impacts
- Monitoring
- Rehabilitation Programme

Each template (part of the plan) is associated to a domain
 → So are each closure actions
 → reporting /domain

GIS Interface (domain management)

For each domain:
Import/drawn shapefile
Visualize



Printing and Sharing

- Click and **share** (for example to put online the last public CMP, or specific data)
- Click and print (for example to print the last version of the CMP to the authorities)

A digital solution to increase your mine value

Efficiency:

- **Time optimization** to update/share MCP (continuous updating, contextual help, guidance and internal documentation)
- **Reduce “Brain Drain”** in case key personnel leave the company
- **Transparency** in the responsibilities
- **Improved management** of the consultant’s contributions

Reliability and cost:

- Improved technical **Due-Diligence outcomes** of your **asset** for e.g. investment, merger or acquisition purposes (ownership transfer → transfer of the digital solution → knowledge and all the data transfer)

- Better control over the **liabilities** and **knowledge gaps**
- Highest degree of **environmental and social success**, usually at a **lower cost** due to a better planning

Transparency and Trust:

- Better integration of **objectives and commitments**
- Increased **compliance** to local, national and international standards and regulations
- Better **reporting** to the stakeholders (governments, population, funders)
- Improve the SLO situation

Keeping the control of the digital system

Thank you.



ClosureMatic Team in Germany (2020)

tommi.kauppila@gtk.fi

lauri.solismaa@gtk.fi

g.bellenfant@brgm.fr

philip.mittelstaedt@dm-group.com

janne.montonen@m-solutions.fi



ClosureMatic Team in Finland (2018)